



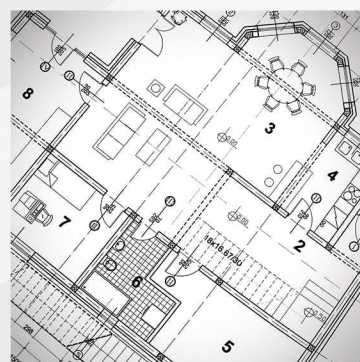
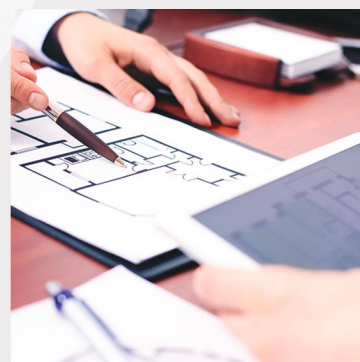
*Celebrating 60 Years 1954-2014*



## IN-HOME DESIGN CONSULTATION

With more than 60 years of experience, Wilshire's design team has an intimate knowledge of how people use technology at home, what products and solutions work, and what features are most important to our clients. Our in-home design consultation packages are engineered to take your project from concept to completion.

Our system designers are masters at developing creative solutions that will enhance your lifestyle and preserve your home's aesthetic beauty. There are a vast amount of details that go into designing reliable and performance oriented audio, video, and control systems. A properly designed system by Wilshire Media Systems will communicate your home's technology needs with your design team and contractor.



Visit our showroom ■ Mon-Sat 10am-6pm ■ Sunday by appointment only

805.497.7536 ■ 1412 N. Moorpark Road, Thousand Oaks, CA 91360 ■ [wilshirehe.com](http://wilshirehe.com)

# IN-HOME DESIGN CONSULTATION

**Wilshire Media Systems** can help design the perfect integrated system for any project, large or small. We hope you will consider setting up an in-home design consultation to discuss your options and detail a plan that works for you and your budget.

|   | <div>TIER 1</div>                  | <div>TIER 2</div>                                     | <div>TIER 3</div>                                     |
|---|------------------------------------|---|---|
|   | \$199 <sup>00</sup>                | \$995 <sup>00</sup>                                   | \$2/ sq.ft.   |
|   | Ideal for<br>basic 1-room upgrades | Ideal for<br>medium-sized retrofit & remodel projects | Ideal for<br>new construction & large remodel package |
| <b>In-home consultation from a professional System Designer</b> <ul style="list-style-type: none"> <li>Design ideas, suggestions &amp; system review discussion</li> <li>Professional measurements</li> <li>Photos &amp; sketches as necessary</li> </ul>   | ✓                                  | ✓   | ✓   |
| <b>Coordination with Client's Architect, Interior Designer, General Contractor, Cabinet Builder, Electrician, etc.</b>  | ✓                                  | ✓   | ✓   |
| <b>Recommended future upgrades &amp; options</b>  | ✓                                  | ✓   | ✓   |
| <b>In-Showroom product demonstration</b>  | ✓                                  | ✓   | ✓   |
| <b>Product specification worksheets</b>   | ✓                                  | ✓   | ✓   |
| <b>Detailed scope of work</b>   | ✓                                  | ✓   | ✓   |
| <b>Detailed parts list</b>  | ✓                                  | ✓   | ✓   |
| <b>In-home consultation from Wilshire Media Systems Project Manager and Field Technician</b> <ul style="list-style-type: none"> <li>Review and discuss existing and future wiring</li> <li>Review and discuss computer network requirements</li> <li>Review and discuss applicable electrical power requirements</li> </ul>   |                                    | ✓   | ✓   |
| <b>On-site product demonstrations</b>   |                                    | ✓   | ✓   |
| <b>System overview description documentation</b>  |                                    | ✓   | ✓   |
| <b>Factory visits to technology manufacturers</b>   |                                    |   | ✓   |
| <b>Access to various Experience Centers to test-drive systems and products in real world environments</b>   |                                    |   | ✓   |
| <b>2D Plans &amp; Elevation</b> <ul style="list-style-type: none"> <li>Detailed speaker placement</li> <li>Network mapping</li> <li>Surveillance layouts as applicable</li> <li>Prewire schedule</li> <li>Wiring schematics</li> <li>Lighting control layout</li> <li>Shade drawings</li> <li>Headend room design</li> <li>Conduit plans</li> <li>Framing requirements</li> <li>Power requirements</li> <li>Heat calculations</li> <li>HVAC requirements</li> <li>Lighting control design and layout</li> <li>Window covering consultation and engineering</li> </ul> |                                    |   | ✓   |
| <b>Revisions to proposed solutions</b>  | 3                                  | 3   | 3   |